

Tutorial para acesso ao PSCAD remotamente

Configuração do programa Putty:

1 - Criar uma nova sessão (Fig1):

Digitar o nome no campo SAVED SESSIONS.

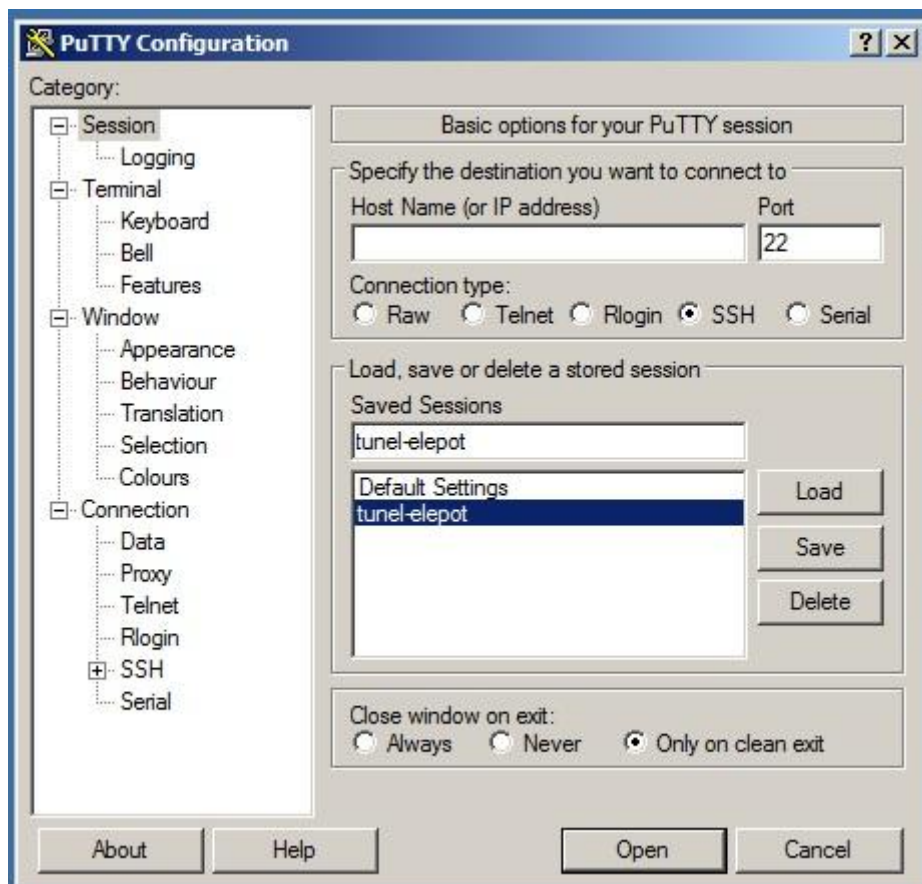


Fig1.

2 - Configurar o host (Fig2):

No campo HOST NAME digitar coe.ufrj.br. No campo PORT, digitar 22.

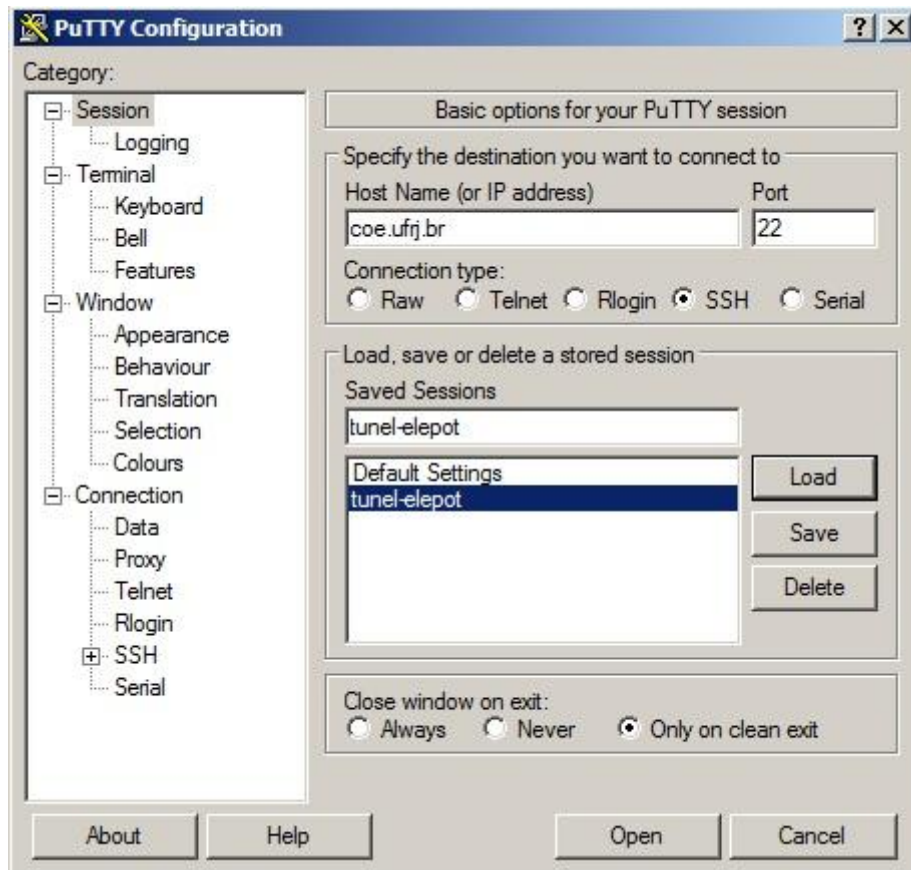


Fig2.

3 - Configurar o SSH (Fig3):

Ordenar o campo Encryption options de acordo com a ordem da Fig3.

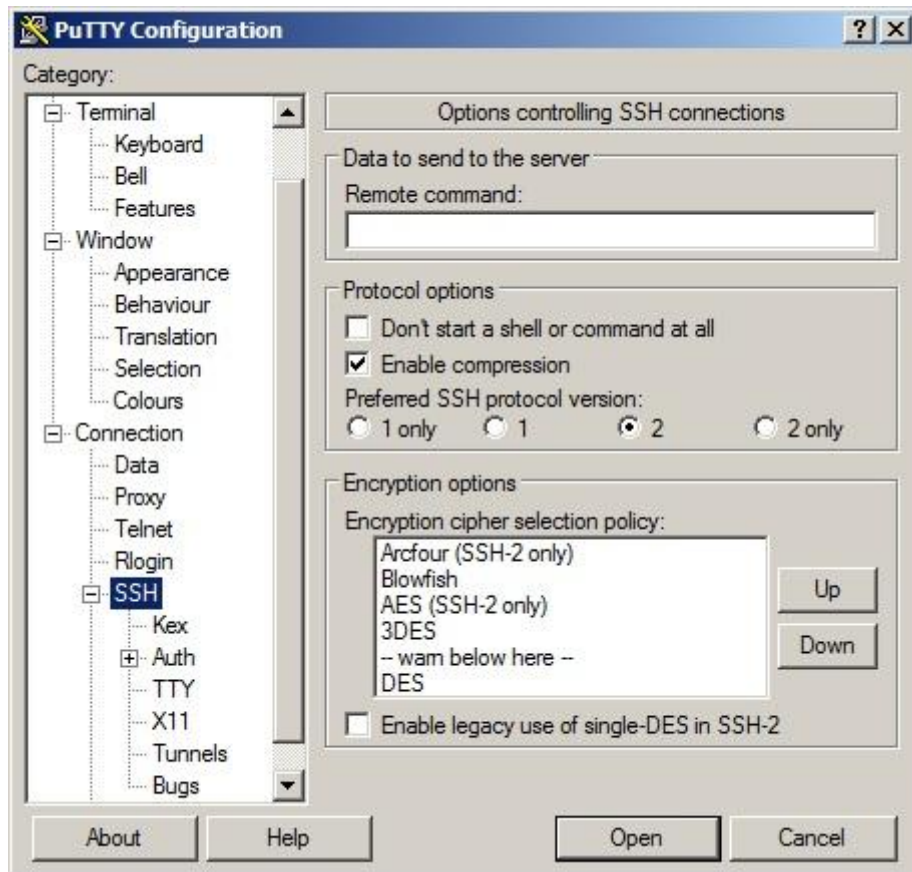


Fig3.

4 - Configurar as portas (Fig4 e Fig5):

Adicionar as portas de acordo com a Fig4. Depois de preencher os campos, clique no botão Add.



Fig4.

A nova configuração deve ficar de acordo com a Fig5:

Não esquecer de salvar as configurações, clicando no botão SAVE da Fig1.

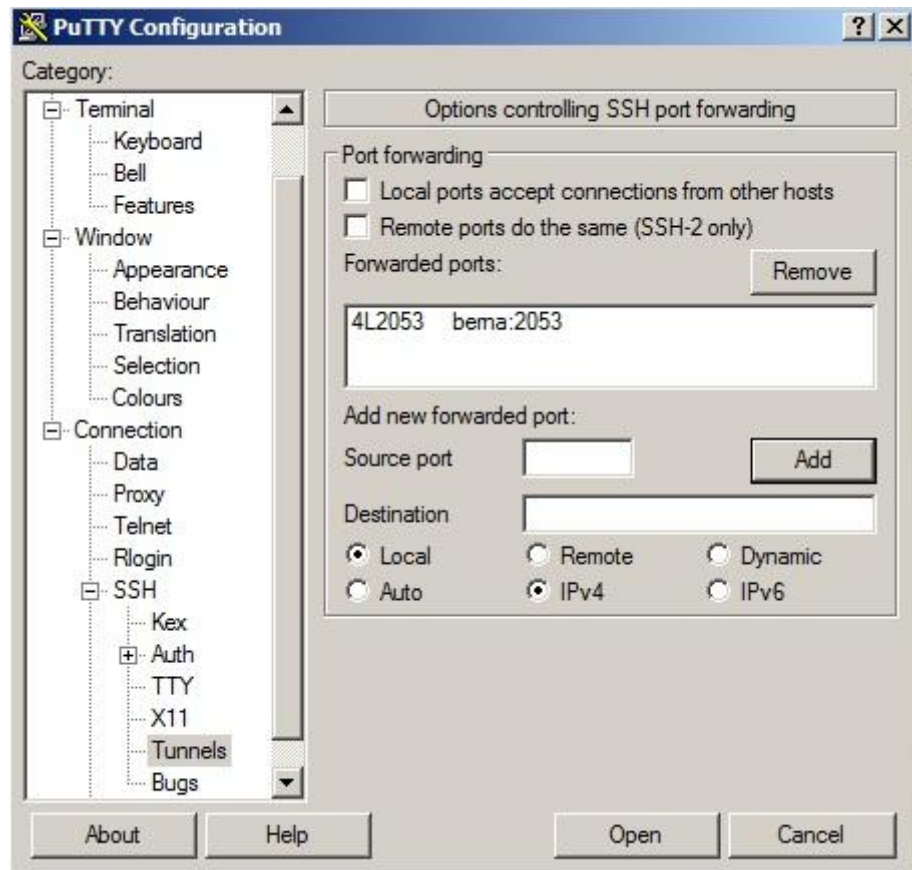


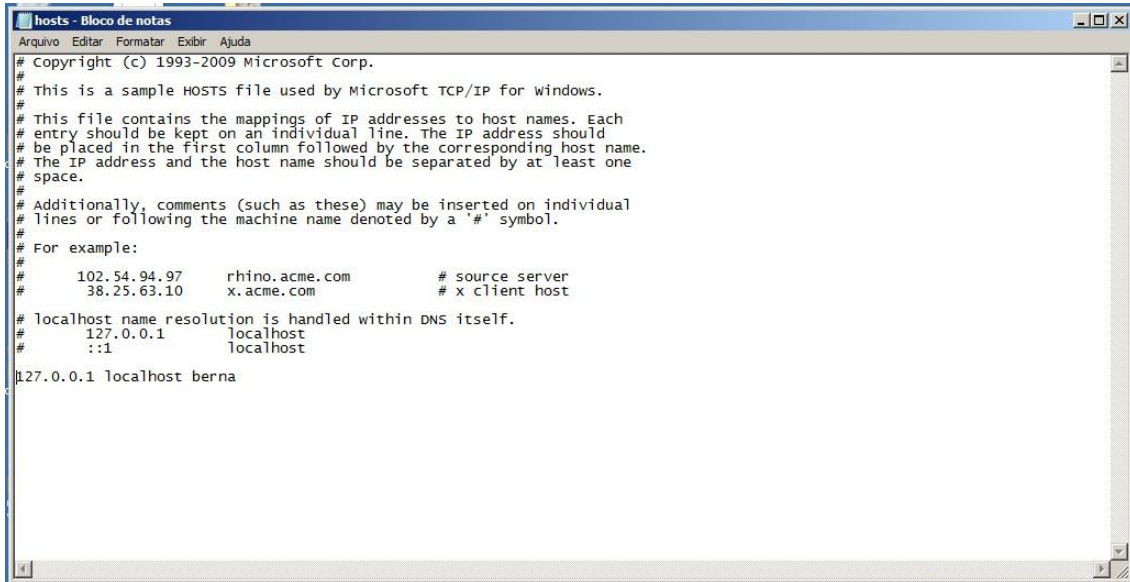
Fig5.

5 - Executar o bloco de nota como administrador (clique no ícone do bloco de notas com o botão direito do mouse e escolha a opção "Executar como Administrador").

6 - Abrir o arquivo hosts no endereço: C:\WINDOWS\system32\drivers\etc\hosts e adicionar a seguinte linha:

127.0.0.1 localhost berna

Como na Fig6:



```
hosts - Bloco de notas
Arquivo  Editar  Formatar  Exibir  Ajuda
# Copyright (c) 1993-2009 Microsoft Corp.
# This is a sample HOSTS file used by Microsoft TCP/IP for Windows.
#
# This file contains the mappings of IP addresses to host names. Each
# entry should be kept on an individual line. The IP address should
# be placed in the first column followed by the corresponding host name.
# The IP address and the host name should be separated by at least one
# space.
#
# Additionally, comments (such as these) may be inserted on individual
# lines or following the machine name denoted by a '#' symbol.
#
# For example:
#
#       102.54.94.97       rhino.acme.com       # source server
#       38.25.63.10      x.acme.com         # x client host
#
# localhost name resolution is handled within DNS itself.
#       127.0.0.1        localhost
#       ::1             localhost
127.0.0.1 localhost berna
```

Fig6.

Configurar o PSCAD:

Na tela SYSTEM SETTINGS da Fig7, digitar no campo LICENSE HOST, berna 2053.

Esses passos são feitos uma única vez.

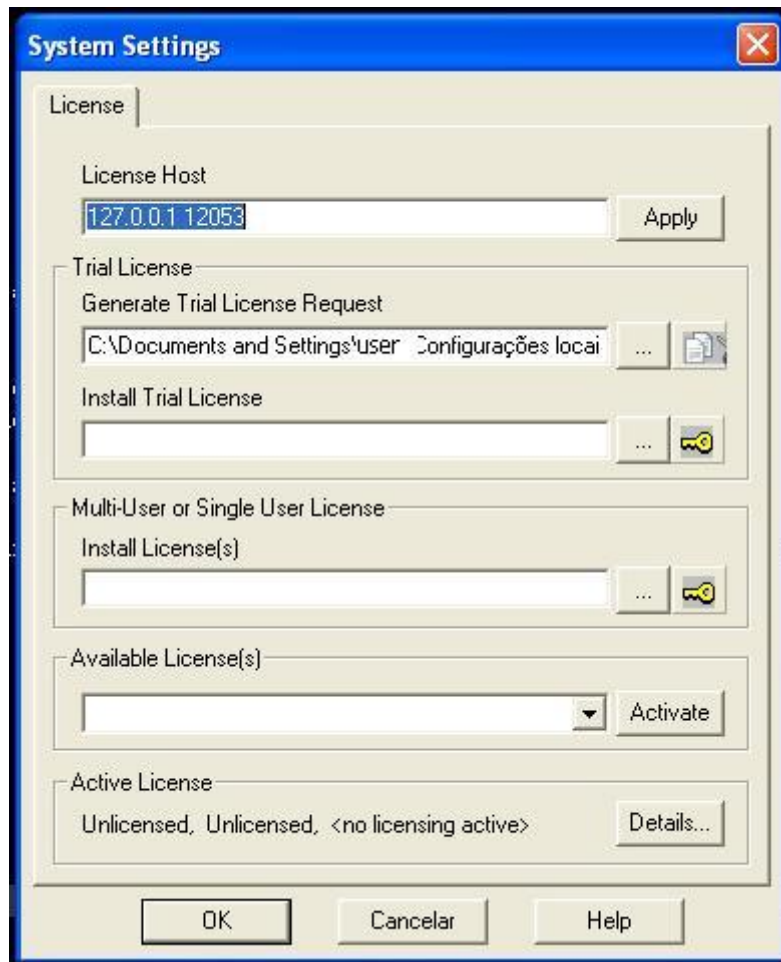


Fig7.

Para acessar o PSCAD, faça o login no putty na sua conta elepot.

Abra o PSCAD.